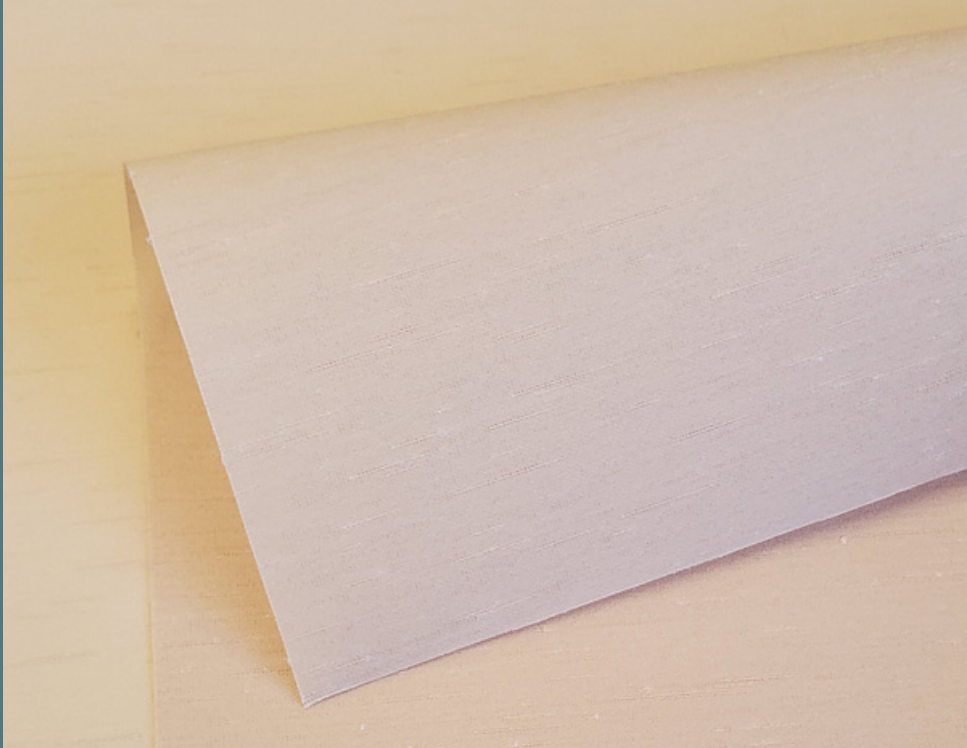


# GOLD CHIC

Sheer



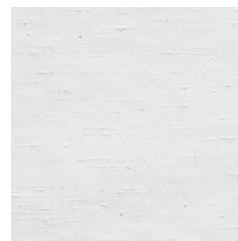
Gold Chic is part of our Sheer line of roller shade fabrics. These patterns gently filter light, making them best choice for many hospitality and commercial projects.

## SPECIFICATIONS

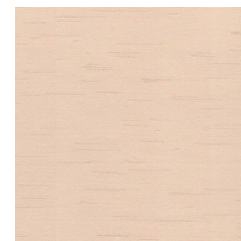
- **Product Type:** Sheer
- **Applications:** Roller Shades, Roman Shades, Panel Blinds
- **Width:** 110 inches
- **Roll Size:** 110 inches x 54 yards (WxL)
- **Fire Retardant:** NFPA 701-2010 Small Scale Test

- **Composition:** 100% Polyester
- **Weave:** Dobby
- **Thickness:** 0.19 mm
- **Weight:** 3.21 oz/yd<sup>2</sup>
- **Cutting:** Ultrasonic, Crush, Cold
- **Welding/Bonding Tape:** Yes
- **Railroading:** Subject to testing
- **Warranty:** 2 years

- **Care & Cleaning Instructions:** Clean with warm water and mild soap. Rinse with clean water. Leave the blind down until completely dry. You can also very gently rub the fabric with a clean white pencil eraser to remove small stains.
- Color variances may occur between fabric production batches. These variances are within industry tolerances, kindly check fabric prior to cutting.



WHITE GC02



NATURAL GC03



MOSS GC01

