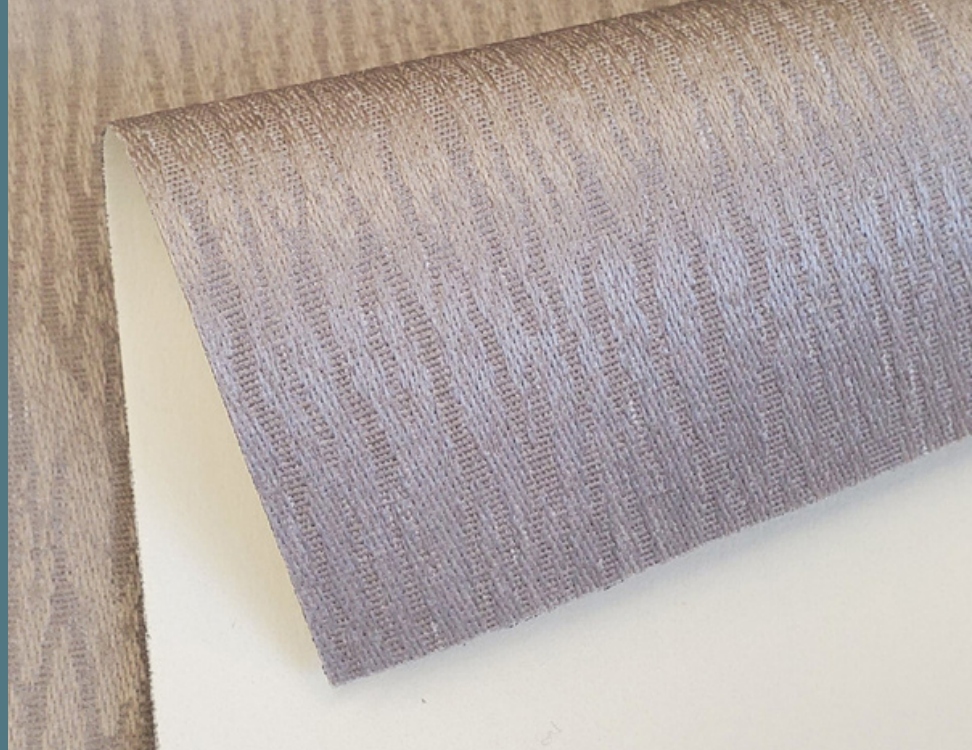


MARULA

Blackout



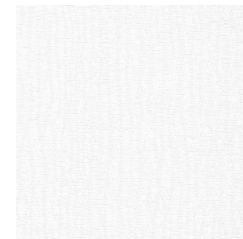
Marula blackout is a striking jacquard design suitable for roller, roman, and panel blinds. Soft to touch flock coating provides effective light, heat, and UV control.

SPECIFICATIONS

- **Product Type:** Blackout
- **Applications:** Roller Shades, Roman Shades, Panel Blinds
- **Width:** 94 inches
- **Roll Size:** 94 inches x 22 yards (WxL)
- **Fire Retardant:** No

- **Composition:** 100% Polyester with Acrylic Foam Backing
- **Weave:** Jacquard
- **Openness Factor:** 0%
- **Thickness:** 0.65 mm
- **Weight:** 11.5 oz/yd²
- **Cutting:** Ultrasonic, Crush, Cold
- **Welding/Bonding Tape:** Yes
- **Railroading:** Not recommended; subject to testing.
- **Warranty:** 2 years

- **Care & Cleaning Instructions:** Clean with warm water and mild soap. Rinse with clean water. Leave the blind down until completely dry. You can also gently rub the fabric with a clean white pencil eraser to remove small stains.
- Color variances may occur between fabric production batches. These variances are within industry tolerances, kindly check fabric prior to cutting.



WHITE 01



EGGSHELL 02



SOURDOUGH 03



PEPPER 04



TRUFFLE 05