

# DARKSOURCE

## Blackout



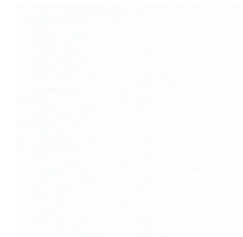
Vinyl blackout roller shades are a staple product among shade makers. As one of the most versatile and affordable options for roller shades, our Darksource is a 4-ply vinyl blackout that offers a semi-matte, plain-weave texture in a selection of timeless colorways. It is easy to clean, moisture resistant, flame retardant, and readily available in multiple cost-effective widths.

### SPECIFICATIONS

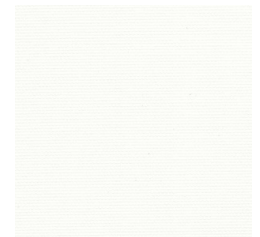
- **Product Type:** Vinyl Blackout
- **Applications:** Roller Shades, Panel Blinds
- **Fire Retardant:** NFPA 701-2010 Small Scale Test
- **Roll Sizes:** 72"x30yd, 100"x30yd, 118"x30yd (WxL)
- **Widths:**
  - White 72", 100", 118"
  - Linen 72", 100"
  - Champagne 72", 100"
  - Fawn 72", 100"
  - Grey 72", 100", 118"
  - Black 72", 118"

- **Composition:** 4-Ply PVC Laminated Fiberglass (75% PVC, 25% Fiberglass)
- **Weave:** Plain
- **Openness Factor:** 0%
- **Thickness:** 0.35 mm ± 0.01 mm
- **Weight:** 13.27 oz/yd<sup>2</sup> ± 0.35 oz
- **Cutting:** Ultrasonic, Crush, Cold
- **Welding/Bonding Tape:** No
- **Railroading:** Not recommended; subject to testing.
- **Warranty:** 5 years

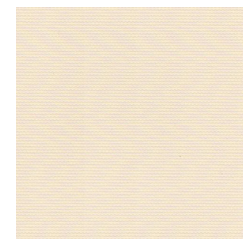
- **Care & Cleaning Instructions:** Clean with warm water. Material can be washed on both sides with mild 5% detergent solution.
- Color variances may occur between fabric production batches. These variances are within industry tolerances, kindly check fabric prior to cutting.



WHITE



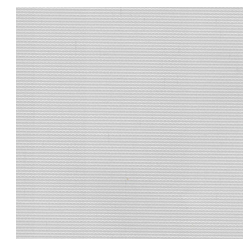
LINEN



CHAMPAGNE



FAWN



GREY



BLACK

