



SEN**BESTA**

2024 CATALOG

CONTENTS

TEXTILES

Blackout

3PES.....	3
Cosmo.....	4
Darksouce.....	5
Essentials.....	6
Meridian.....	7
Meridian Supreme+.....	8
Monterey.....	9
Palm Beach BO.....	10
Woodland.....	11

Screen

Senscreen 1% 3% 5%.....	12
-------------------------	----

Light Filtering

Cascades.....	13
Hillcrest.....	14
Malibu.....	15
Palm Beach LF.....	16

Sheer

Athens.....	17
Bianco.....	18
Gold Chic.....	19
Ice.....	20
Ice Board.....	21
Serene.....	22
Vita.....	23

Zehra

Aria	24
Peninsula.....	25
Westin.....	26

COMPONENTS

Chain

Stainless Steel.....	27
Nickel Plated.....	27
Plastic.....	27

Connectors

Stainless Steel.....	27
Nickel Plated.....	27
Plastic.....	27

Stoppers

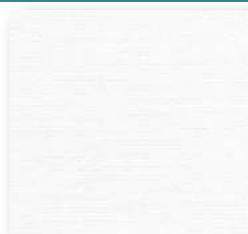
Nickel Plated.....	27
Plastic.....	27



3 P E S



Pebble 09



Pure White 08



Cotton 01



Sand 03



Pebble 09



Rock 04



Marine 07

3PES blackout features a two-tone pattern, creating depth and dimension. The backing was uniquely designed to match the color on the front of the shade, giving the outside view a more distinguished look or the ability to blend with the exterior color palette.

Product Type: Blackout

Applications: Roller Shades, Panel Blinds

Width: 110 inches

Standard Roll Length: 30 yards

Weave: Plain

Openness Factor: 0%

Composition: 100% Polyester with Acrylic Foam Backing

Thickness: 0.5 mm \pm 0.05 mm

Weight: 11.21 oz/yd² \pm 10%

Cutting: Ultrasonic, Crush, Cold

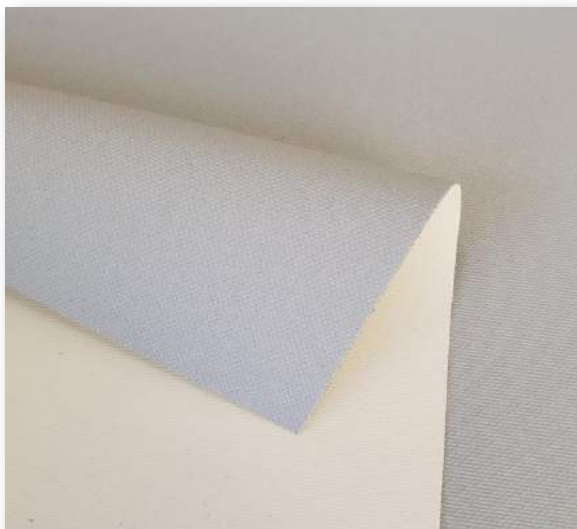
Welding/Bonding Tape: Subject to testing; results vary by equipment

Railroading: Not recommended; subject to testing

Warranty: 5 years

Care & Cleaning Instructions: Clean with warm water and mild soap. Rinse with clean water. Leave the blind down until completely dry. You can also very gently rub the fabric with a clean white pencil eraser to remove small stains.

COSMO



Pewter



White



Alabaster



Pewter



Seal

Crafted with precision, Cosmo is a high-end plain weave blackout roller shade fabric that is commercial-grade quality, fire-retardant, and boasts a generous width of 118 inches. Elevate your space with the perfect blend of style and safety, as Cosmo effortlessly blocks out light while exuding timeless elegance.

Product Type: Blackout

Applications: Roller Shades, Roman Shades, Panel Blinds

Width: 118 inches

Standard Roll Length: 30 yards

Fire Retardant: NFPA 701-1989 Small Scale Test

Weave: Plain

Openness Factor: 0%

Composition: 100% Polyester with Acrylic Backing

Thickness: 0.68 mm

Weight: 12.39 oz/yd²

Cutting: Ultrasonic, Crush, Cold

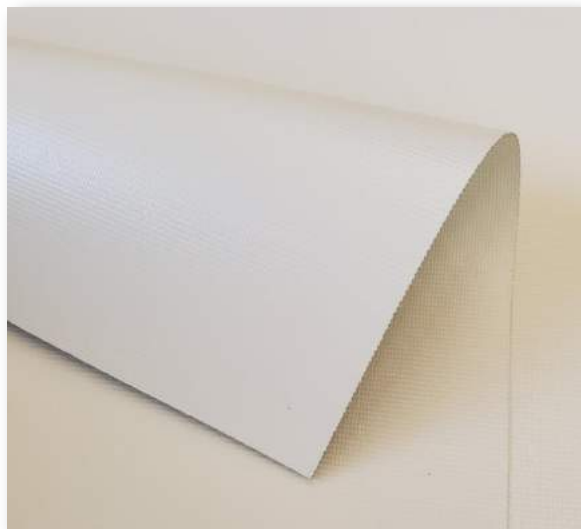
Welding/Bonding Tape: Yes

Railroading: Not recommended; subject to testing

Warranty: 5 years

Care & Cleaning Instructions: Dust can be removed from the fabric by vacuum cleaning or soft duster. Light stains can be removed with a sponge and soapy water. Avoid using detergents, solvents as it may cause damage to the coating of the fabric.

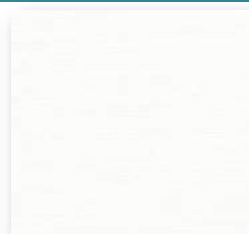
DARKSOURCE



Fawn



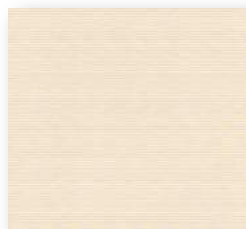
White



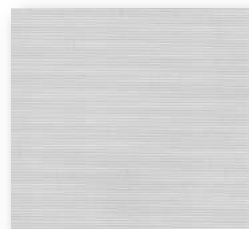
Linen



Fawn



Champagne



Grey



Black

As one of the most versatile and affordable options for roller shades, our Darksource is a 4-ply vinyl blackout that offers a semi-matte, plain-weave texture in a selection of timeless colorways. It is easy to clean, moisture resistant, flame retardant, and readily available in multiple cost-effective widths.

Product Type: Vinyl Blackout

Applications: Roller Shades, Panel Blinds

Widths: 72 inches for All Colors;

100 inches for White, Linen, Fawn, Champagne, Grey;

118 inches for White, Grey, Black

Standard Roll Length: 30 yards

Fire Retardant: NFPA 701-2010 Small Scale Test

Thickness: 0.35 mm \pm 0.01

Weight: 13.27 oz/yd² \pm 0.35 oz

Cutting: Ultrasonic, Crush, Cold

Welding/Bonding Tape: No

Railroading: Not recommended; subject to testing

Warranty: 5 years

Weave: Plain

Openness Factor: 0%

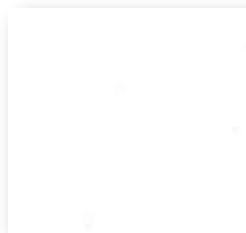
Composition: 4-Ply PVC Laminated Fiberglass (75% PVC, 25%

Care & Cleaning Instructions: Clean with warm water. Material can be washed on both sides with mild 5% detergent solution.

ESSENTIALS



Dune



Ice



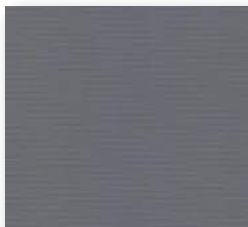
Loft



Dune



Shadow



Odyssey



Midnight

Essentials is a 100% blackout that comes in a sophisticated color range. This fabric provides maximum privacy and light blocking. It is PVC free and also very easy to clean.

Product Type: Blackout

Applications: Roller Shades, Panel Blinds

Width: 118 inches

Standard Roll Length: 30 yards

Fire Retardant: NFPA 701-1989 Small Scale Test

Weave: Plain

Openness Factor: 0%

Composition: 100% Polyester with Acrylic Backing

Thickness: 0.33 mm

Weight: 11.8 oz/yd²

Cutting: Ultrasonic, Crush, Cold

Welding/Bonding Tape: Yes

Railroading: Not recommended; subject to testing

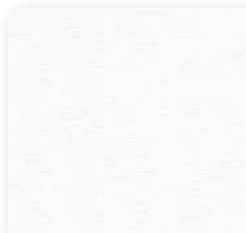
Warranty: 5 years

Care & Cleaning Instructions: Remove dust with vacuum cleaner or compressed air. Do not scrub. Do not use solvents or any abrasive substance which might damage the coating of the fabric. Clean with a sponge or a soft brush dipped in soapy water using mild detergent. Rinse with clean water. Leave the blind down until completely dry.

MERIDIAN



Ash 08



Frost 01



Driftwood 03



Kettle 04



Ash 08



London Fog 05



Obsidian 07

Meridian is simple yet sophisticated; the color palette complements a broad spectrum of modern décor and interior spaces. This fabric is a blackout and provides complete privacy.

Product Type: Blackout

Applications: Roller Shades, Panel Blinds

Width: 118 inches

Standard Roll Length: 30 yards

Fire Retardant: NFPA 701-1989 Small Scale Test

Weave: Plain

Composition: 100% Polyester with Acrylic Backing

Thickness: 0.5 mm \pm 0.05 mm

Weight: 12.39 oz/yd² \pm 5%

Cutting: Ultrasonic, Crush, Cold

Welding/Bonding Tape: Yes

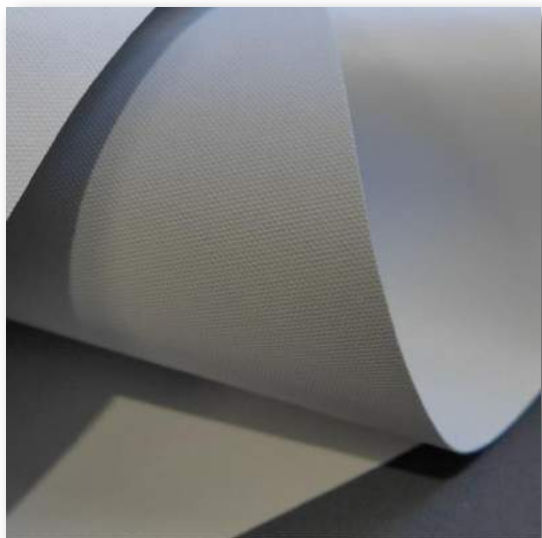
Railroading: Not recommended; subject to testing

Warranty: 5 years

Openness Factor: 0%

Care & Cleaning Instructions: Dust can be removed from the fabric by vacuum cleaning or soft duster. Light stains can be removed with a sponge and soapy water. Avoid using detergents, solvents as it may cause damage to the coating of the fabric.

MERIDIAN SUPREME+



Salt Lake 745



Arctic 741



Oasis 742



Highland 743



Sedona 744



Salt Lake 745



Mystic 746



Abyss 747

Greenguard Gold certified, Meridian Supreme+ significantly enhances its appeal for commercial applications, positioning itself as the ultimate choice for those who prioritize both aesthetic excellence and a safe, healthy indoor environment. Featuring an elegant plain weave pattern with a subtle soft texture and a blackout backing that enhances energy efficiency. Additionally, its fire retardant properties make it an ideal choice to meet diverse construction requirements for new builds.

Product Type: Blackout

Applications: Roller Shades, Panel Blinds

Width: 118 inches

Standard Roll Length: 30 yards

Fire Retardant: NFPA 701-2023 Small Scale Test

Weave: Plain

Openness Factor: 0%

Composition: 100% Polyester with Acrylic Backing

Thickness: 0.48 mm \pm 5%

Weight: 10.32 oz/yd² \pm 5%

Light Fastness: \geq 6 (Scale of 8)

Cutting: Crush or Cold Recommended

Welding/Bonding Tape: Yes

Railroading: Not recommended

Warranty: 5 years

UVA / UVB: 100%

Tear Strength: Warp < 85 N/5cm, Weft < 60 N/5cm, Tested to ISO 4674

Breaking Strength: Warp < 1750 N/5cm, Weft < 1100 N/5cm, Tested to ISO 13934-1

Elongation to Breaking Point: Warp < 30%, Weft < 24%, Tested to ISO 13934-1

Care & Cleaning Instructions: Dust can be removed from the fabric by vacuum cleaning or soft duster. Light stains can be removed with a sponge and soapy water. Avoid using detergents. solvents as it may cause damage to the coating of the fabric.

MONTEREY



Mammoth 21



Hermosa 22



Runyon 23



Silver Lake 24

Inspired by the nature of California, neutral colors are delicately layered throughout to create a captivating texture with a light and airy finish. Monterey features a soft foam blackout coating to minimize solar heat gain, creating a cool, serene environment.

Product Type: Blackout

Applications: Roller Shades, Roman Shades, Panel Blinds

Width: 110 inches

Standard Roll Length: 33 yards

Fire Retardant: NFPA 701 Small Scale Test

Weave: Customweave

Composition: 100% Polyester with Acrylic Foam Backing

Thickness: 0.73 mm \pm 5%

Weight: 10.71 oz/yd² \pm 5%

Cutting: Ultrasonic, Crush, Cold

Welding/Bonding Tape: Yes

Railroading: Not recommended; subject to testing

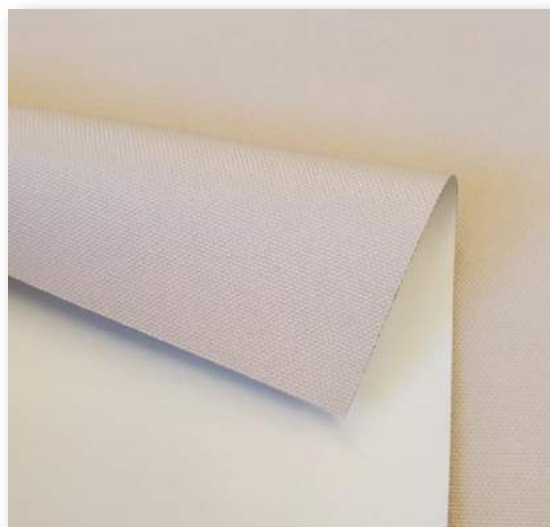
Warranty: 5 years

Openness Factor: 0%

Care & Cleaning Instructions: Surface dust should be removed with duster or soft cloth. Never use abrasive products or solvents/industrial based cleaners.

PALM BEACH BO

SHAW



Merino 04



Quill 01



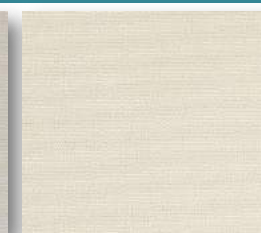
Lyric 02



Gull 03



Merino 04



Jasmine 15



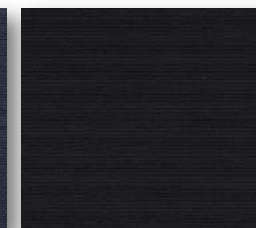
Porpoise 05



Iron 06



Summer Storm 07



Quartz 08

Palm Beach blackout is a plain weave fabric suitable for Roller, Roman, and Panel Blinds. The soft to touch blackout foam coating provides effective light, heat and UV control. Light filtering option is also available.

Product Type: Blackout

Applications: Roller Shades, Roman Shades, Panel Blinds

Width: 118 inches

Standard Roll Length: 22 yards

Weave: Plain

Openness Factor: 0%

Composition: 100% Polyester with Foamed Acrylic Backing

Thickness: 0.65 mm

Weight: 12.09 oz/yd²

Cutting: Ultrasonic, Crush, Cold

Welding/Bonding Tape: Yes

Railroading: Not recommended; subject to testing

Warranty: 5 years

Care & Cleaning Instructions: Surface dust should be removed with duster or soft cloth. Never use abrasive products or solvents/industrial based cleaners.

WOODLAND



Gazelle



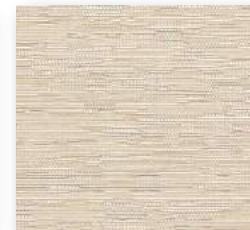
Swan



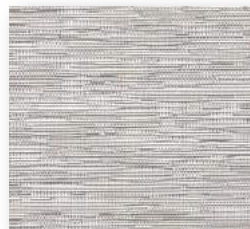
Urchin



Baffin



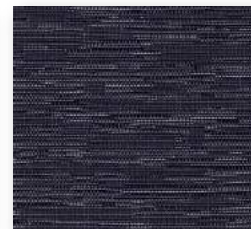
Gazelle



Errol



Lynx



Formosa

Woven with a rich texture, multi-tone color and denser weave, Woodland blackout offers a casual, relaxed appeal and offers complete privacy and sun protection in any given room.

Product Type: Blackout

Applications: Roller Shades, Panel Blinds

Width: 118 inches

Standard Roll Length: 30 yards

Fire Retardant: NFPA 701-1989 Small Scale Test

Weave: Jacquard

Openness Factor: 0%

Composition: 100% Polyester with Acrylic Backing

Thickness: 0.65 mm \pm 0.06 mm

Weight: 11.8 \pm 0.88 oz/yd²

Cutting: Ultrasonic, Crush, Cold

Welding/Bonding Tape: Yes

Railroading: Not recommended; subject to testing

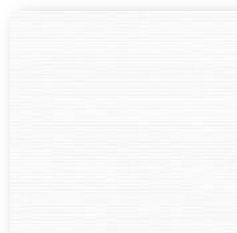
Warranty: 5 years

Care & Cleaning Instructions: Clean with warm water and mild soap. Rinse with clean water. Leave the blind down until completely dry. You can also very gently rub the fabric with a clean white pencil eraser to remove small stains.

SENSCREEN | 1% 3% 5%



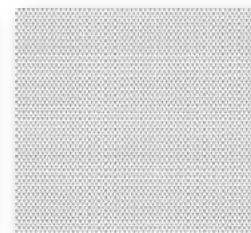
White+Grey 2003



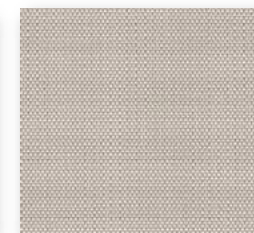
White 2073



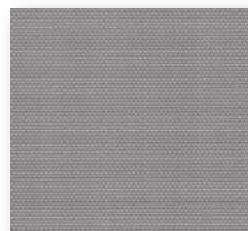
White+Beige 2002



White+Grey 2003



Beige+Grey 2005



Grey 2006



Black+Grey 2007



Black+Copper 2008A Black 2009



Our Senscreen fabrics provide a comfortable, energy efficient environment that blocks up to 95% of UV rays while maintaining natural sunlight and allowing an outdoor view. The perfect and simple solution for controlling heat and glare in any given room.

Product Type: 1%, 3%, 5% Screen

Applications: Roller Shades, Panel Blinds

Width: 118 inches

Standard Roll Length: 30 yards

Fire Retardant: NFPA 701-2010 Small Scale Test

Thickness:

1% openness - 0.67 mm \pm 5%,

3% openness - 0.59 mm \pm 5%,

5% openness - 0.53 mm \pm 5%

Weight:

1% openness - 14.16 oz/yd² \pm 5%

3% openness - 13.57 oz/yd² \pm 5%

5% openness - 12.68 oz/yd² \pm 5%

Cutting: Ultrasonic recommended, Crush, Rotary Blade

Welding/Bonding Tape: No

Railroading: Subject to testing

Warranty: 5 years

Weave: 2x2 Basket weave

Openness Factor: 1%, 3%, or 5%

Composition: 30% Polyester / 70% PVC

Care & Cleaning Instructions: Dust can be removed from the fabric by vacuum cleaning or soft duster. Light stains can be removed by gently wiping with a damp cloth or sponge. Do not use detergents, solvents, or scrub against the fabric because it will damage the coating of the fabric. Allow fabric to air dry completely before rolling up.

CASCADES



Switzer 25



Poppy 26



Newport 27



Granite 28

Soft, natural light cascades through the room with this exquisite light-filtering pattern. Beyond gently diffusing the sunlight, these shades add a sophisticated touch to the room, in a neutral color palette that blends beautifully with any décor.

Product Type: Light Filtering

Applications: Roller Shades, Roman, Panel Blinds

Width: 110 inches

Standard Roll Length: 33 yards

Cutting: Ultrasonic, Crush, Cold

Welding/Bonding Tape: Yes

Railroading: Not recommended; subject to testing

Warranty: 5 years

Weave: Customweave

Composition: 100% Polyester with Acrylic Coating

Thickness: 0.49 mm \pm 5%

Weight: 5.78 oz/yd² \pm 5%

Care & Cleaning Instructions: Surface dust should be removed with duster or soft cloth. Never use abrasive products or solvents/industrial based cleaners.

HILLCREST



Cypress



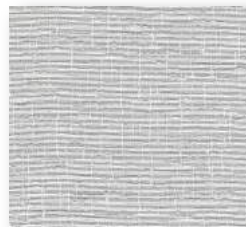
Magnolia 01



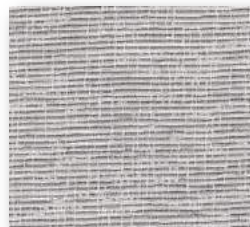
Cypress 02



Acacia 03



Greystone 04



Ember 05

Woven from 100% polyester, Hillcrest is a light-filtering fabric that gently diffuses light with a striking multi-tone weave pattern for added dimension and texture in modern and authentic colors.

Product Type: Light Filtering

Applications: Roller Shades, Panel Blinds

Width: 110 inches

Standard Roll Length: 30 yards

Fire Retardant: NFPA 701-2019 Small Scale Test

Weave: Jacquard

Composition: 100% Polyester with Acrylic Coating

Thickness: 0.58 mm \pm 5%

Weight: 5.75 oz/yd² \pm 5%

Cutting: Ultrasonic, Crush, Cold

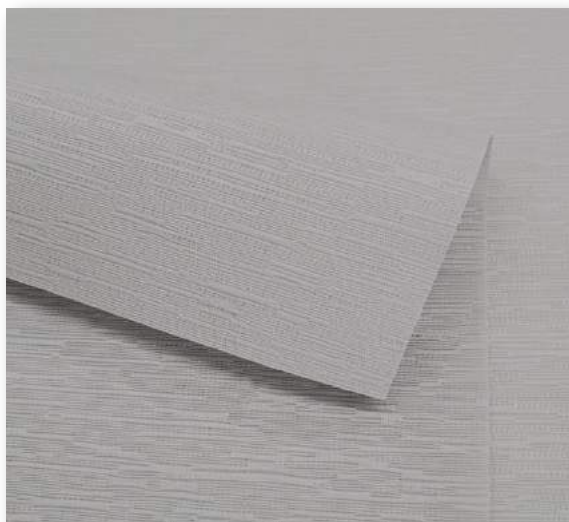
Welding/Bonding Tape: Yes

Railroading: Subject to testing

Warranty: 5 years

Care & Cleaning Instructions: Dust with a dry cloth or wipe with damp cloth. Vacuum cleaning is recommended. Do not use solvents to clean the shade.

MALIBU



Cliffside 04



Whitewater 01



Coastline 02



Loftyhill 03



Cliffside 04



Bayshore 05

Malibu is a modern, woven polyester fabric with a soft, subtle texture that gently welcomes light.

Product Type: Light Filtering

Applications: Roller Shades, Panel Blinds

Width: 110 inches

Standard Roll Length: 50 yards

Fire Retardant: NFPA 701-2022 Small Scale Test

Weave: Jacquard

Composition: 100% Polyester

Thickness: 0.54 mm \pm 15%

Weight: 6.19 oz/yd² \pm 10%

Cutting: Ultrasonic, Crush, Cold

Welding/Bonding Tape: Yes

Railroading: Subject to testing

Warranty: 5 years

Care & Cleaning Instructions: Fabric should be regularly dusted/vacuumed as appropriate. If commercial spot cleaners are used, they must be first tested and allowed to dry on an inconspicuous area, to ensure compatibility.

PALM BEACH LF

SHAW



Pearl 11



Melody 09



Horizon 10



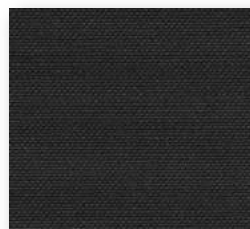
Pearl 11



Angora 16



Monsoon 12



Steel 13



Ink 14

Palm Beach light filtering is a plain weave fabric suitable for Roller, Roman, and Panel Blinds. Light-filtering quality provides decorative light control with day and night time privacy. Blackout option is also available.

Product Type: Light Filtering

Applications: Roller Shades, Roman Shades, Panel Blinds

Width: 118 inches

Standard Roll Length: 22 yards

Weave: Plain

Composition: 100% Polyester with Acrylic Coating

Thickness: 0.55 mm

Weight: 9.14 oz/yd²

Cutting: Ultrasonic, Crush, Cold

Welding/Bonding Tape: Yes

Railroading: Subject to testing

Warranty: 5 years

Care & Cleaning Instructions: Surface dust should be removed with duster or soft cloth. Never use abrasive products or solvents/industrial based cleaners.

ATHENS



Athens



Athens

Athens is part of our Hospitality Sheers, an exquisite array of delicate, sheer roller shades meticulously curated to elevate your hospitality spaces to new heights of tranquility and sophistication. With its serene soft white hues and a versatile assortment of design patterns, this collection effortlessly fosters a soothing and inviting atmosphere that will leave a lasting impression on your esteemed guests. Embrace the perfect fusion of beauty and functionality, immersing your interiors in a realm of calming sophistication.

Product Type: Sheer

Applications: Roller Shades, Roman Shades, Panel Blinds

Width: 118 inches

Standard Roll Length: 50 yards

Fire Retardant: NFPA 701 Small Scale Test

Weave: Plain

Thickness: 0.3 mm \pm 5%

Weight: 3.3 oz/yd² \pm 5%

Cutting: Ultrasonic, Crush, Cold, Laser

Welding/Bonding Tape: Yes

Railroading: Not Recommended

Warranty: 5 years

Composition: 100% Polyester with Acrylic Coating

Care & Cleaning Instructions: Clean with warm water and mild soap. Rinse with clean water. Leave the blind down until completely dry.

BIANCO



Natural GC03



White GC02

Bianco is part of our Hospitality Sheers, an exquisite array of delicate, sheer roller shades meticulously curated to elevate your hospitality spaces to new heights of tranquility and sophistication. With its serene soft white hues and a versatile assortment of design patterns, this collection effortlessly fosters a soothing and inviting atmosphere that will leave a lasting impression on your esteemed guests. Embrace the perfect fusion of beauty and functionality, immersing your interiors in a realm of calming sophistication.

Product Type: Sheer

Applications: Roller Shades, Panel Blinds

Width: 110 inches

Standard Roll Length: 55 yards

Fire Retardant: NFPA 701-2023 Small Scale Test

Weave: Plain

Thickness: 0.28 mm \pm 5%

Weight: 3.33 oz/yd² \pm 5%

Cutting: Ultrasonic, Cold

Welding/Bonding Tape: Yes

Railroading: Subject to testing

Warranty: 5 years

Composition: 100% Polyester

Care & Cleaning Instructions: Clean with warm water and mild soap. Rinse with clean water.

GOLD CHIC



Natural GC03



White GC02

Gold Chic is part of our Hospitality Sheers, an exquisite array of delicate, sheer roller shades meticulously curated to elevate your hospitality spaces to new heights of tranquility and sophistication. With its serene soft white hues and a versatile assortment of design patterns, this collection effortlessly fosters a soothing and inviting atmosphere that will leave a lasting impression on your esteemed guests. Embrace the perfect fusion of beauty and functionality, immersing your interiors in a realm of calming sophistication.

Product Type: Sheer

Applications: Roller Shades, Roman Shades, Panel Blinds

Width: 110 inches

Standard Roll Length: 54 yards

Fire Retardant: NFPA 701-2010 Small Scale Test

Weave: Dobby

Composition: 100% Polyester

Thickness: 0.29 mm

Weight: 2.95 oz/yd²

Cutting: Ultrasonic, Crush, Cold

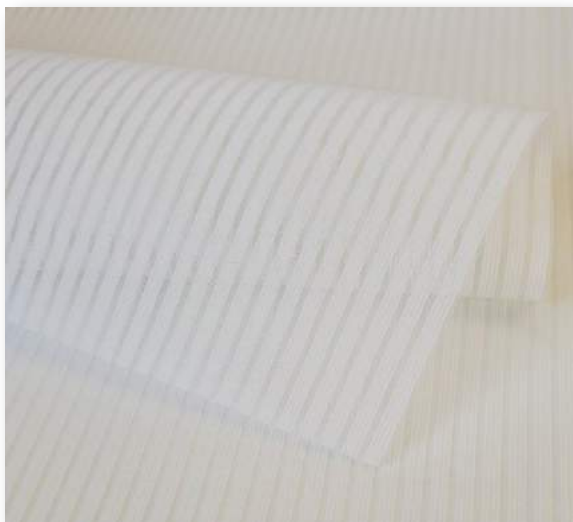
Welding/Bonding Tape: Yes

Railroading: Subject to testing

Warranty: 5 years

Care & Cleaning Instructions: Clean with warm water and mild soap. Rinse with clean water. Leave the blind down until completely dry. You can also very gently rub the fabric with a clean white pencil eraser to remove small stains.

ICE



White I03



White I03

Ice is part of our Hospitality Sheers, an exquisite array of delicate, sheer roller shades meticulously curated to elevate your hospitality spaces to new heights of tranquility and sophistication. With its serene soft white hues and a versatile assortment of design patterns, this collection effortlessly fosters a soothing and inviting atmosphere that will leave a lasting impression on your esteemed guests. Embrace the perfect fusion of beauty and functionality, immersing your interiors in a realm of calming sophistication.

Product Type: Sheer

Applications: Roller Shades, Roman Shades, Panel Blinds

Widths: 94 inches, 110 inches

Standard Roll Length: 54 yards

Fire Retardant: NFPA 701-2019 Small Scale Test

Weave: Knit

Composition: 100% Polyester

Thickness: 0.32 mm

Weight: 3.54 oz/yd²

Cutting: Ultrasonic, Crush, Cold

Welding/Bonding Tape: Yes

Railroading: Subject to testing

Warranty: 5 years

Openness Factor: >20%

Care & Cleaning Instructions: Clean with warm water and mild soap. Rinse with clean water. Leave the blind down until completely dry.

ICE BOARD



White IB03



White IB03

Ice Board is part of our Hospitality Sheers, an exquisite array of delicate, sheer roller shades meticulously curated to elevate your hospitality spaces to new heights of tranquility and sophistication. With its serene soft white hues and a versatile assortment of design patterns, this collection effortlessly fosters a soothing and inviting atmosphere that will leave a lasting impression on your esteemed guests. Embrace the perfect fusion of beauty and functionality, immersing your interiors in a realm of calming sophistication.

Product Type: Sheer

Applications: Roller Shades, Roman Shades, Panel Blinds

Width: 94 inches

Standard Roll Length: 54 yards

Fire Retardant: NFPA 701-2019 Small Scale Test

Weave: Knit

Composition: 100% Polyester with Acrylic Coating

Thickness: 0.37 mm

Weight: 4.37 oz/yd²

Cutting: Ultrasonic, Crush, Cold

Welding/Bonding Tape: Yes

Railroading: Subject to testing

Warranty: 5 years

Openness Factor: >20%

Care & Cleaning Instructions: Clean with warm water and mild soap. Rinse with clean water. Leave the blind down until completely dry.

SERENE



Natural GC03



White GC02

Serene is part of our Hospitality Sheers, an exquisite array of delicate, sheer roller shades meticulously curated to elevate your hospitality spaces to new heights of tranquility and sophistication. With its serene soft white hues and a versatile assortment of design patterns, this collection effortlessly fosters a soothing and inviting atmosphere that will leave a lasting impression on your esteemed guests. Embrace the perfect fusion of beauty and functionality, immersing your interiors in a realm of calming sophistication.

Product Type: Sheer

Applications: Roller Shade

Width: 98 inches

Standard Roll Length: 55 yards

Fire Retardant: NFPA 701 Small Scale Test

Weave: Rapier Machine

Composition: 100% Trevira CS Polyester with Acrylic Coating

Thickness: 0.35 mm \pm 0.05 mm

Weight: 4.27 oz/yd² \pm 5%

Cutting: Cold Recommended

Welding/Bonding Tape: Yes

Railroading: Not Recommended

Warranty: 5 years

Openness Factor: 7%

Care & Cleaning Instructions: Clean with warm water and mild soap. Rinse with clean water.

VITA



Vita



Vita

Vita is part of our Hospitality Sheers, an exquisite array of delicate, sheer roller shades meticulously curated to elevate your hospitality spaces to new heights of tranquility and sophistication. With its serene soft white hues and a versatile assortment of design patterns, this collection effortlessly fosters a soothing and inviting atmosphere that will leave a lasting impression on your esteemed guests. Embrace the perfect fusion of beauty and functionality, immersing your interiors in a realm of calming sophistication.

Product Type: Sheer

Applications: Roller Shades

Width: 110 inches

Standard Roll Length: 44 yards

Fire Retardant: NFPA 701 Small Scale Test

Weave: Warp Knitting

Composition: 100% Polyester with Acrylic Coating

Thickness: 0.3 mm \pm 0.05 mm

Weight: 3.69 oz/yd²

Cutting: Cold Recommended

Welding/Bonding Tape: Yes

Railroading: Not Recommended

Warranty: 5 years

Openness Factor: 10%

Care & Cleaning Instructions: Clean with warm water and mild soap. Rinse with clean water.

ARIA



Brown 03



Ivory 01



Beige 02



Brown 03



Charcoal 04

Our Zebra fabrics control sunlight by raising or lowering the shade. By transforming the best features of a hard window covering, zebra fabrics are a new and modern look in soft window covering options and provide limitless options for privacy and light control.

Product Type: Zebra

Applications: Zebra Shades

Width: 108 inches

Standard Roll Length: 54 yards

Weave: Dobby

Composition: 100% Polyester

Thickness: 0.34 mm

Weight: 2.06 oz/yd²

Cutting: Crush, Cold

Welding/Bonding Tape: Yes

Railroading: No

Warranty: 2 years

Band/Sheer Size: 3" Band, 2" Sheer

Care & Cleaning Instructions: Feather dusting or gentle vacuuming.

PENINSULA



Mushroom 02



White 01



Mushroom 02



Chocolate 03



Charcoal 04

Our Zebra fabrics control sunlight by raising or lowering the shade. By transforming the best features of a hard window covering, zebra fabrics are a new and modern look in soft window covering options and provide limitless options for privacy and light control.

Product Type: Zebra

Applications: Zebra Shades

Width: 108 inches

Standard Roll Length: 54 yards

Weave: Dobby

Composition: 100% Polyester

Thickness: 0.19 mm

Weight: 4.13 oz/yd²

Cutting: Crush, Cold

Welding/Bonding Tape: Yes

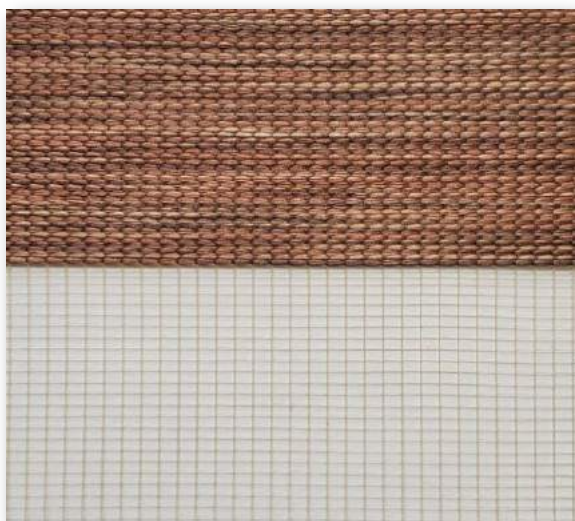
Railroading: No

Warranty: 2 years

Band/Sheer Size: 4" Band, 3" Sheer

Care & Cleaning Instructions: Feather dusting or gentle vacuuming.

WESTIN



Brown 03



White 01



Mushroom 02



Brown 03



Chocolate 04

Our Zebra fabrics control sunlight by raising or lowering the shade. By transforming the best features of a hard window covering, zebra fabrics are a new and modern look in soft window covering options and provide limitless options for privacy and light control.

Product Type: Zebra

Applications: Zebra Shades

Width: 110 inches

Standard Roll Length: 33 yards

Weave: Dobby

Composition: 100% Polyester

Thickness: 0.55 mm

Weight: 3.01 oz/yd²

Cutting: Crush, Cold

Welding/Bonding Tape: Yes

Railroading: No

Warranty: 2 years

Band/Sheer Size: 3" Band, 2" Sheer

Care & Cleaning Instructions: Feather dustir

COMPONENTS



METAL CHAIN

Compositions: Stainless Steel or Nickel Plated

Pitch Sizes: 50-51, or 48-49 for SS only

Ball: #10

Roll Length: 500 FT **Pack Size:** 4 rolls/box



CONNECTORS

Compositions: Stainless Steel or Nickel Plated

Compatible with: 50-51 or 48-49

Ball: #10

Pack Size: 1,000 pcs



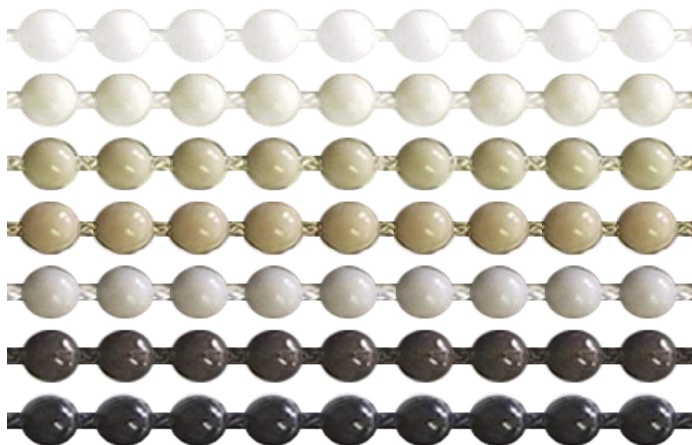
STOPPERS

Composition: Nickel Plated

Compatible with: 50-51 or 48-49

Ball: #10

Pack Size: 1,000 pcs



PLASTIC CHAIN

Composition: Plastic

Colors: White, Vanilla, Oak, Jute, Grey, Chocolate, Black

Pitch Size: 6mm (50-51)

Ball: #10

Roll Length: 250 M

Pack Size: 1 roll/box

Chain Loop Sizes: 2', 3', 4', 5', 6'

Pack Size: 25 pcs

**Chain Loop for White and Vanilla only*



CONNECTORS

Composition: Plastic

Colors: White, Vanilla, Oak, Jute, Grey, Chocolate, Black

Pitch Size: 6mm (50-51)

Ball: #10

Pack Size: 500 pairs



STOPPERS

Composition: Plastic

Color: Clear

Pitch Size: 6mm (50-51)

Ball: #10

Pack Size: 500 pcs